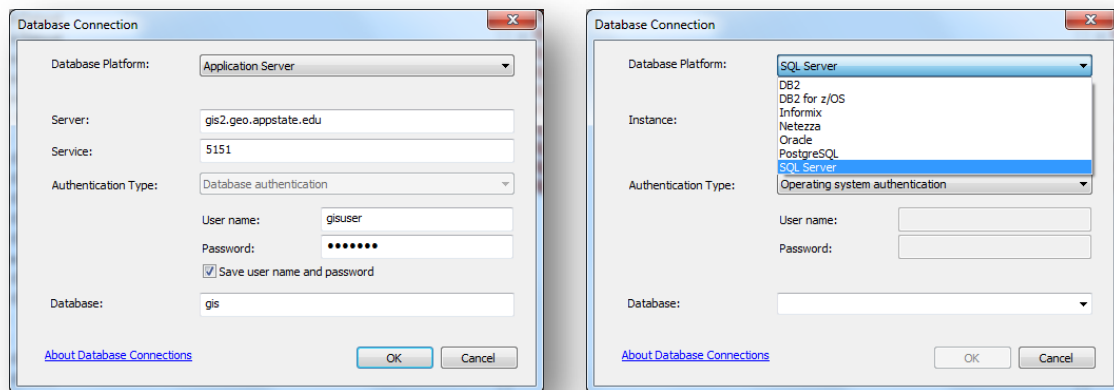


Connecting to the SDE Database with 10.1 Client

With the release of ArcGIS Desktop 10.1, there is a new method of connecting to spatial databases. ESRI is moving away from the application server connections toward directly connecting to the database resource.

Connecting to the application server requires an extra step if you're using an ArcGIS Desktop 10.1 client.



Problem being that the “Application Server” choice is NOT there at this time.

Connecting to the SDE Service Workaround

Download the SDE Connection File

The file is available at the following location:

<http://geo.appstate.edu/sites/geo.appstate.edu/files/10.sde>

Save the file locally on your machine.

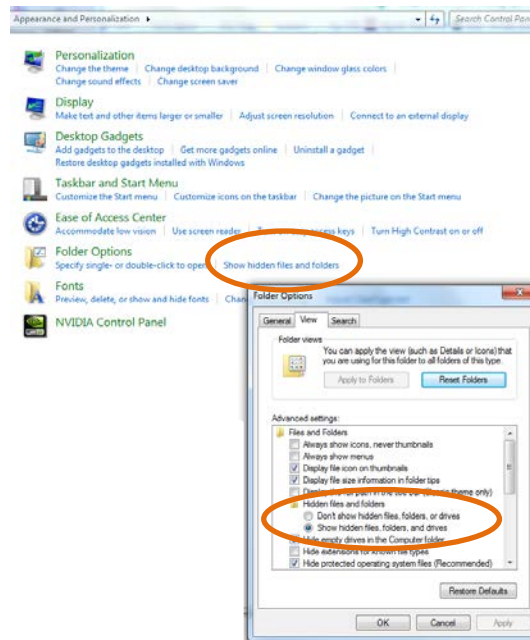
The default path where this file should be saved is:

C:\Users\\AppData\Roaming\ESRI\Desktop10.1\ArcCatalog

Exit out and reopen ArcCatalog. You should see a connection in ArcCatalog, under Database Connections called **10.sde**.

Can't find the AppData folder??

*The AppData folder is most likely hidden by default. In Windows 7, you can make it visible by going to **Control Panel** -> **Folder Options**, choosing the view tab, and enabling **"Show hidden files, folders, and drives"** from the Hidden files and folders area.*



For questions or issues please contact:

Andi Cochran Sigsbey
262-6698
RSW 331
cochranam@appstate.edu